

SHOP ORGANIZERS

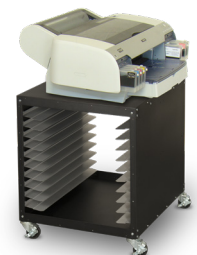
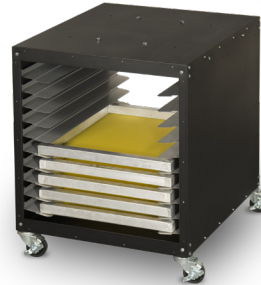
Utility Cart UC-1000

High strength Utility Cart can be used as a stand for shop equipment!!

- CAPACITY** Holds up to 23" x 31" Screens.
- MOBILE** Locking casters for easy mobility
- ADJUSTABLE** Configure the shelves how you want them!
- CONVENIENT** Optional side shelves for storing squeegees, ink scoops & small tools (up to 4)
- LIGHT TIGHT** Optional door kit turns cart into storage unit for coated screens.
- DIMENSIONS** 32" x 26" x 32" (81 x 66 x 81cm)

Shipping: 29" x 42" x 6" @ 98lbs (74 x 107 x 16cm @ 44.5kg)

- Options**
- Squeegee side shelves
 - Additional inner shelves
 - Door kit
 - Mounting kits available for many products



Screen Rack

The Screen Rack holds up to 24 screens and comes in three convenient sizes with angled shelves to contact only the edge of the screen. Screen racks include a 1 year warranty on manufacturer's defects.

Choose your size

	SR-23	SR-28	SR-31	SR-36	SR-38 (MHM Screens)
Capacity	23" wide (58cm)	28" (71cm)	31" (79cm)	36" (91cm)	38" (96cm)
Assembled	24.5" x 29" x 71" tall	24.5" x 33" x 71" tall	24.5" x 36" x 71" tall	24.5" x 41" x 71" tall	24.5" x 43" x 71" tall
Dimensions	(62 x 73.7 x 180cm)	(62 x 84 x 180cm)	(62 x 91.4 x 180cm)	62 x 107 x 180cm)	62 x 109 x 180cm)
Shipping	2 @ 43" x 29" x 9" (37 lbs)	2 @ 43" x 29" x 9" (37 lbs)	2 @ 43" x 29" x 9" (37 lbs)	2 @ 43" x 29" x 9" (37 lbs)	2 @ 43" x 29" x 9" (37 lbs)
(Box #1 & 2)	2 @ 109x74x23cm (16.8kg)	2 @ 109x74x23cm (16.8kg)	2 @ 109x74x23cm (16.8kg)	2 @ 109x74x23cm (16.8kg)	2 @ 109x74x23cm (16.8kg)
(Box #3)	32" x 6" x 6" (13 lbs) 81 x 15 x 15cm (5.9kg)	38" x 6" x 6" (15 lbs) 97 x 15 x 15cm (6.8kg)	38" x 6" x 6" (15 lbs) 97 x 15 x 15cm (6.8kg)	44" x 6" x 6" (18 lbs) 112 x 15 x 15cm (8.2kg)	44" x 6" x 6" (18 lbs) 112 x 15 x 15cm (8.2kg)



Heavy Duty Shelving

VSU-4812 / VSU-4824

Heavy duty shelves with optional wheels are available in two sizes. Shelf capacity is 300 lbs each.

- CAPACITY (2 sizes)**
- 48" W x 24" D x 12 3/4" T shelves (122 x 61 x 32.4cm) or
 - 48" W x 12" D x 12 3/4" T shelves (122 x 30.5 x 32.4cm)
 - 48 1/2 x 24 1/2 or (12 1/2) x 72" tall

SIZE ASSEMBLED



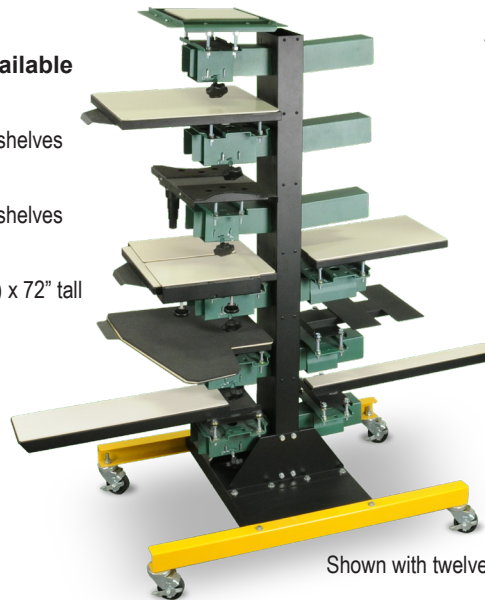
Pallet Rack

VP-CRUISER

Must add V1 and V2 pallet mounts separately
Holds up to (12) V2 or (18) V1 mounts

Conveniently store and organize your pallets for V-1000 and V-2000HD with this heavy duty rack on wheels.

Mount for V-1000 - 11-02-006-0 - \$7.50/each
Mount for V-2000HD - 11-02-005-0 - \$7.50/each



Shown with twelve (12) V2 pallet mounts.

